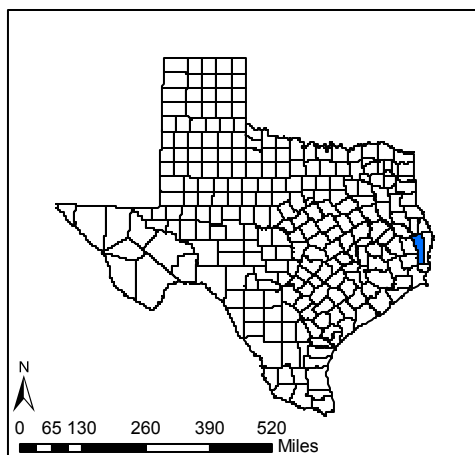
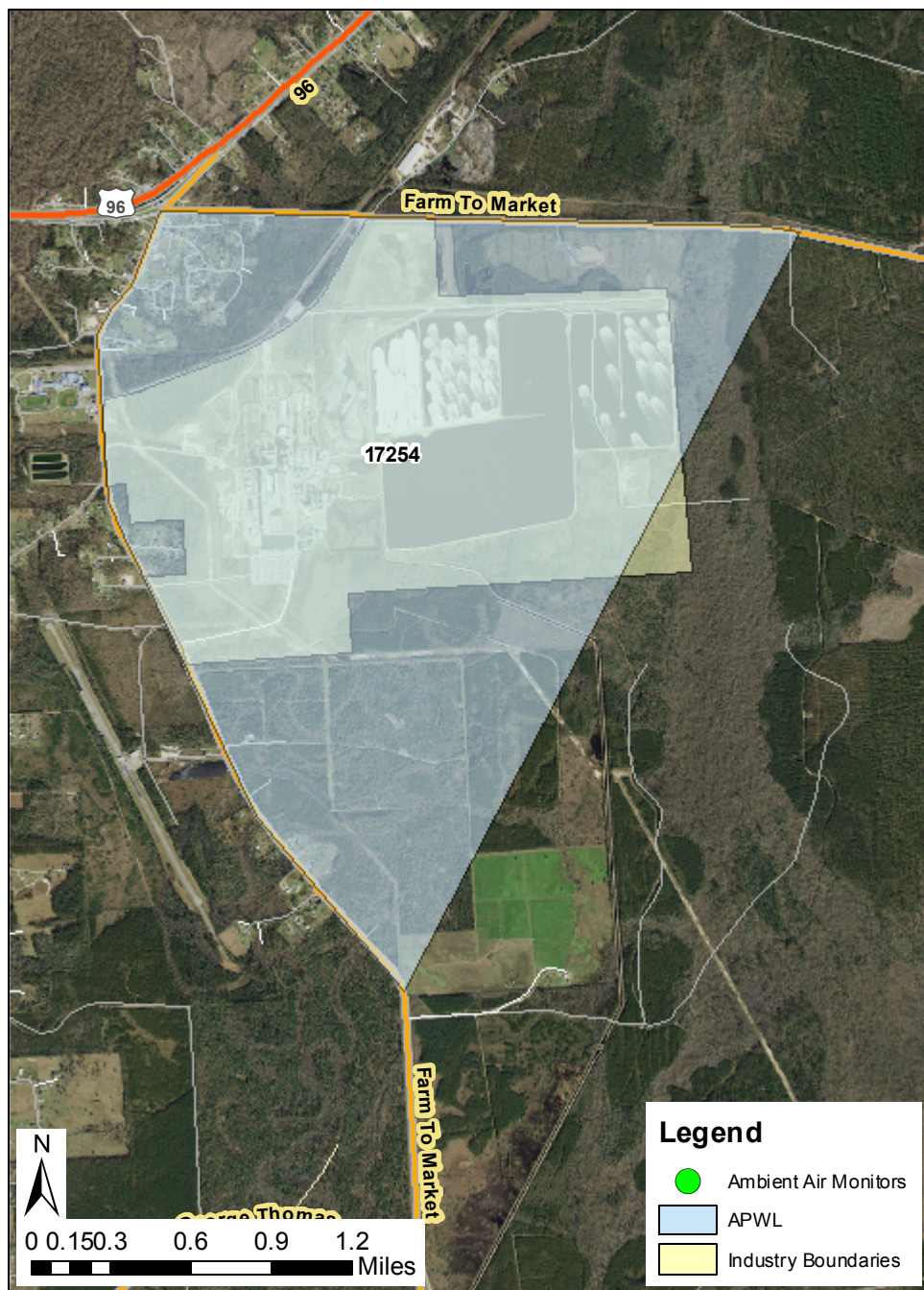


Air Pollutant Watch List Area

APWL1001 - Hydrogen Sulfide
Evadale, Jasper County, Texas

Texas Commission
on Environmental Quality



Map created on June 24, 2009

This map was generated by the Toxicology Division (TD) of the Texas Commission on Environmental Quality. No claims are made to the accuracy or completeness of the data, or to the suitability of the map for a particular use. This APWL area of concern may contain facilities which have not been identified by the TD. For more information regarding this map, please contact the TD at (512)239-1795.

Where is the Area of Concern Located?

- * South of FM 2246
- * East of FM 105

Why is this Location and Pollutant(s) on the APWL?

Mobile air monitoring trips were conducted annually within TCEQ Region 10 from 2003 through 2007. Several reported hydrogen sulfide (H_2S) levels measured downwind of Mead Westvaco in Evadale, TX exceeded the 30-minute H_2S state regulatory standard.

Annual evaluations may be accessed here:

<http://www.tceq.state.tx.us/implementation/tox/regmemo/AirMain.html>

Number	Company Name	RN
17254	MEADWESTVACO TEXAS LP	RN102157609